



[www.icecompanies.com](http://www.icecompanies.com)



## Operator & Parts Manual

Dual Motor Vacuum Cleaner



# IW80

**The**  
*Peoples*  
**COMPANY**

2400022  
REV.01(12-2013)

**INTERNATIONAL CLEANING EQUIPMENT**



## READ OPERATOR MANUAL CAREFULLY

**IMPORTANT:** To ensure full warranty protection, Please fill out & return your warranty card.

Please fill out at time of installation for future reference.

Model No. \_\_\_\_\_

Serial No. \_\_\_\_\_

Machine Options \_\_\_\_\_

Sales Rep. \_\_\_\_\_

Sales Rep. phone no. \_\_\_\_\_

Customer ID Number \_\_\_\_\_

Installation Date \_\_\_\_\_

### HOW TO ORDER PARTS

Only use ICE Company supplied or equivalent parts. Parts and supplies may be ordered online, by phone, by fax or by mail.

1. Identify the machine model.
2. Identify the machine serial number from the data label.
3. Ensure the proper serial number is used from the parts list.
4. Identify the part number and quantity.

Do not order by page or reference numbers.

5. Provide your name, company name, customer ID number, billing and shipping address, phone number and purchase order number.



### PROTECT THE ENVIRONMENT

Please dispose of packaging materials, old machine components such as batteries, hazardous fluids, including antifreeze and oil, in an environmentally safe way according to local waste disposal regulations. Always remember to recycle.

International Cleaning Equipment  
XiangShi Road, LiaoBu, DongGuan, GuangDong, China  
Tel: 0769-8186 9000  
Fax: 0769-8186 3000

**Specifications and parts are subject to change without notice.**

---

# TABLE OF CONTENTS

SAFETY PRECAUTIONS .....	4
MACHINE COMPONENTS .....	5
MACHINE SETUP & INSTALLATION .....	6
MACHINE OPERATION .....	6
TANK DRAINING.....	7
PREVENTATIVE MAINTENANCE.....	8
BASIC TROUBLESHOOTING .....	9
TECHNICAL SPECIFICATION .....	9
WIRING DIAGRAM.....	10
PARTS LIST.....	11

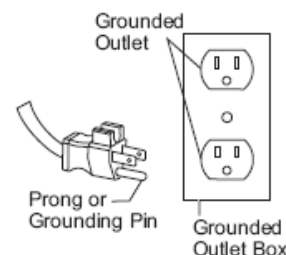
## SAFETY PRECAUTIONS



**Carefully read and understand this manual before operating this machine.  
This machine must be grounded!**

This scrubbing machine shall be grounded while in use to protect the operator from electric shock. Grounding provides a path of least resistance for electric current. This machine is equipped with a cord having an equipment-grounding conductor and grounding plug. The plug must be plugged into an appropriate outlet that is properly installed and grounded in accordance with all local codes and ordinances. Do not remove the ground pin under any circumstances.

This machine is for use on a nominal 220 ~ volt circuit and has a grounding plug that resembles the plug illustrated in Figure. Make sure that the machine is connected to an outlet having the same configuration as the plug. No adapter should be used with this machine.



This machine is intended for commercial use. It is constructed for use in an indoor environment and is not intended for any other use. Use only recommended accessories.

**1. Do not operate machine:**

- Unless trained and authorized.
- In flammable or explosive areas.
- With a damaged cord or plug
- If not in proper operating condition.
- Unless you have read and understood the operator's manual.
- With the use of extension cords.
- In outdoor areas and standing water.

**2. Before operating machine:**

- Make sure all safety devices are in place and operating properly.

**3. When using machine:**

- Do not run machine over cord.
- Do not pull cord around sharp edges or corners.
- Do not handle plug with wet hands.
- Report machine damage or fault operation immediately.
- Do not pull machine by cord or plug.
- Do not unplug by pulling on the cord.
- Do not stretch cord.
- Keep cord away from heated surfaces.

**4. Before leaving or servicing machine:**

- Turn off machine.
- Unplug cord from outlet.

**5. When servicing machine:**

- Unplug cord from outlet.
- Use manufacturer supplied or approved replacement parts.



**To avoid electrical shock, please replace the power cord immediately if any damage is being detected. The replacement must be performed only by an authorized person or by our customer service center.**



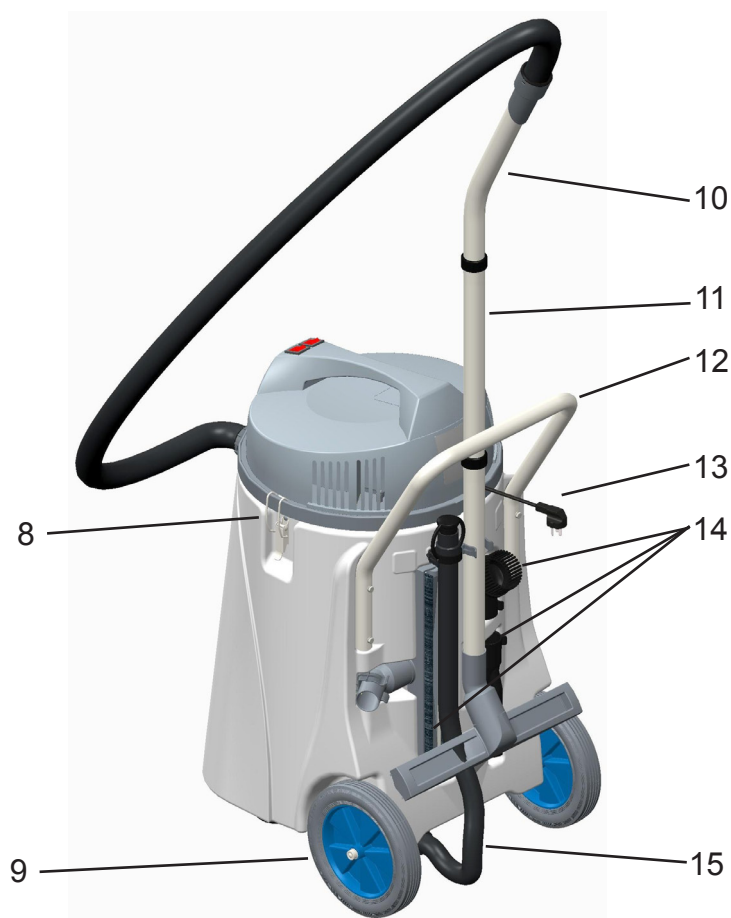
**Flammable materials can cause explosion or fire. Do not use flammable materials in tanks or pick them up.**

# MACHINE COMPONENTS

## Machine Structure

1. Power head
3. On / off switch
5. Tank
7. Clamp, right
9. 10" wheel
11. Straight tube
13. Power cord
15. Drain hose

2. Handle
4. Vacuum hose
6. Castor
8. Clamp, left
10. Curving tube
12. Machine handle
14. Accessories



## MACHINE SET UP & INSTALLATION

### UNPACK MACHINE:

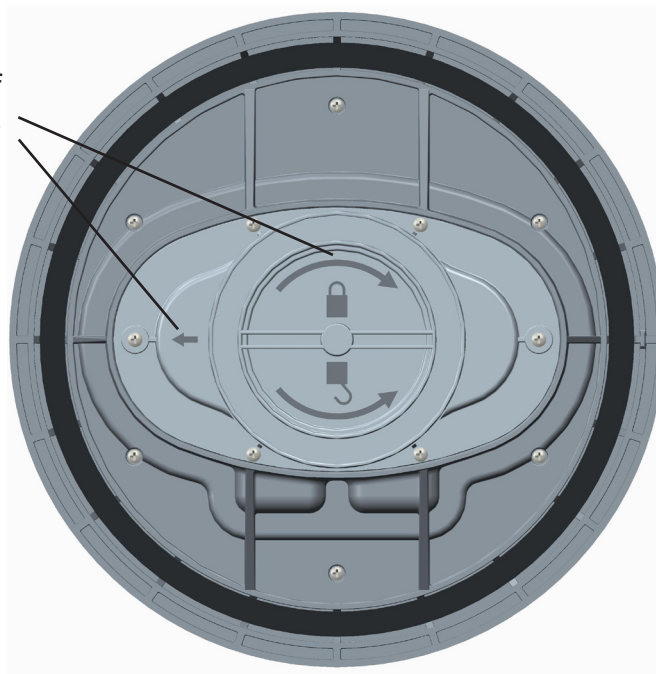
Be sure and check packing carton for any damage. Immediately report any damage to carrier. Be careful not to let machine vibrate while carrying, Check contents of package to ensure that the following items are included: machine, accessories.

### MACHINE SET UP & PRE-OPERATION CHECKS:

- 1) Sweep the outside of the machine.
- 2) Make sure the voltage of machine conform to local voltage.
- 3) Check that float shut-off or dust filter is properly installed.

**NOTE:** The float shut-off should be installed like the picture below.

The float shut-off should be installed like this.



## MACHINE OPERATION



**Do not operate machine unless you have read and understood this manual.**

### WET OPERATION

- 1) Make sure that the tank is emptied of any dry dust before using the machine for wet pick-up.
- 2) Remove the power head, check to make sure that the float shut-off is installed and fully functional.
- 3) Install the power head back and connect vacuum hose to inlet on the machine body.
- 4) Attach appropriate accessory tool for the job to be completed.
- 5) Make sure the switches are in the OFF position, then plug power cord into a grounded outlet.



**Do not use an extension cord in conjunction with the standard power cord.**

- 6) Turn power switch to "on" position.
- 7) Use the appropriate tool to pick up the water.
- 8) During wet pickup, the float shut-off will automatically prevent water from entering the tank once the tank is full.



**If foam develops in the tank during wet vacuuming, use defoamer chemical to help eliminate the foam. Foam will not activate the float shut-off, and therefore, may cause vacuum motor damage.**

## DRY OPERATION

- 1) If the machine has been used for wet pick-up, empty the tank first. Rinse it out and dry it completely and install the dry container system. Do not use the machine for dry pick-up without the dry container system in place.
- 2) Remove the power head, make sure the dust bag and filter is properly installed.



**Do not operate machine to vacuum dust without filter properly installed.**

- 3) Replace the power head and connect vacuum hose to inlet on the machine body.
- 4) Attach appropriate accessory tool for the job to be completed.
- 5) Make sure the switches are in the OFF position, then plug power cord into a grounded outlet.



**Do not use an extension cord in conjunction with the standard power cord.**

- 6) Turn power switch to "on" position.
- 7) Use the appropriate tool to pick up the dust.
- 8) Check the filter bag periodically to see if it is full. For optimal performance, replace the bag when it is 3/4 full.

## DRAINING THE TANK

- 1) Unplug machine from power outlet.
- 2) Transport machine to nearest floor drain or bucket.
- 3) Remove drain hose from the rear of machine. Remove the ball plug from the hose, then drain the dirty water from the tank.
- 4) After the water have drained, remove the power head and rinse the tank with clean water.
- 5) Reposit the power head. Replace the ball plug on the drain hose and hang hose back on the rear of the machine.



**To prevent odors in the tank, remove the power head when machine is not used to allow air to circulate.**

## PREVENTATIVE MAINTENANCE

To keep the machine performing well for many years, please follow the following maintenance procedures.



**Before performing any maintenance on the machine, be sure that the power is turned off and the cord is unplugged.**



**Repairs are to be completed by Authorized Service Centers only. Any repairs completed by unauthorized persons will void the warranty.**

- 1) Unplug machine as soon as you are done using it.
- 2) Check power cord for any damage. Replace the cord immediately if any damage is detected.
- 3) Lubricate casters with a water resistant lubricant every month.
- 4) Check machine for loose or missing nuts and bolts, replace them if necessary.
- 5) Check the filter, and clean it after each use.
- 6) Check the vacuum hose for any holes and clogs.
- 7) Clean the outside of the machine with a mild cleaner.

**Note: The carbon brushes of the motors may need to replace due to normal wear and tear caused by using the machine overtime. They can only replaced by authorized distributor.**

## MACHINE STORAGE

- 1) Unplug machine from power source and wrap the cord on the right clamp.
- 2) Reposit all the accessories.
- 3) Store in upright position in a dry area.
- 4) Store with the power head moved if necessary so the tank may breathe.



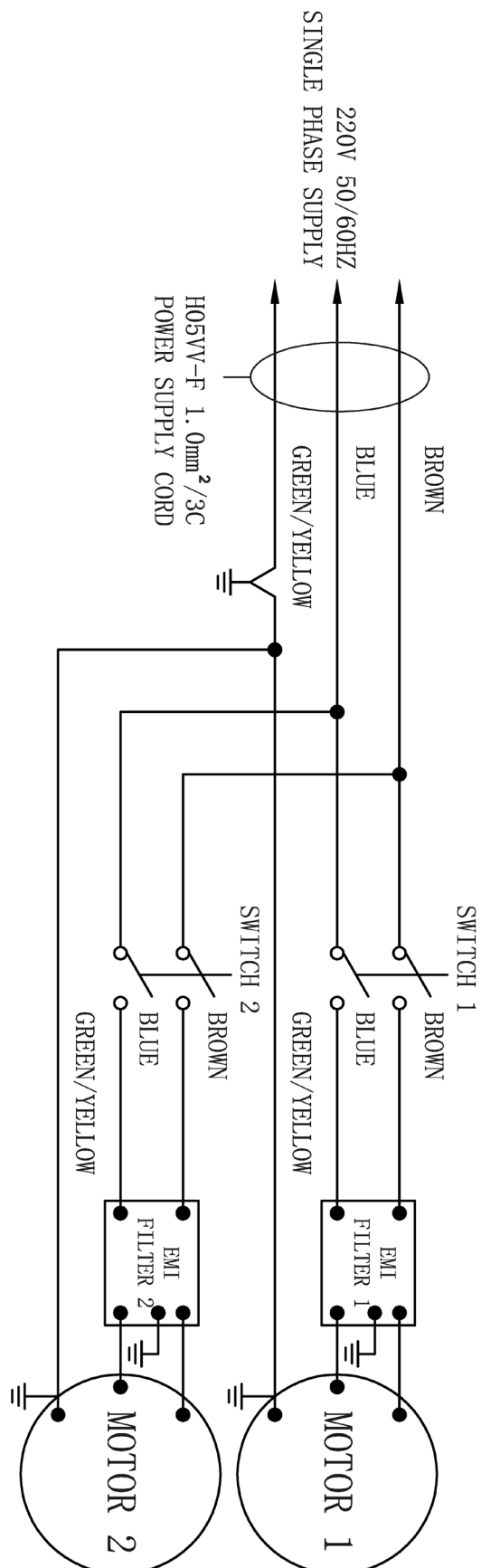
## BASIC TROUBLESHOOTING

PROBLEM	CAUSE	SOLUTION
No Power	The wiring not connected correctly or bad wiring	Check the wiring or contact ICE Distributor
	Bad vacuum motor	Contact ICE Distributor
	Carbon brushes worn out	Contact ICE Distributor
Little or no air flow	The power head not placed correctly	Make sure the power head is placed appropriately
	Tank is full or dust bag is full	Drain the tank or replace the dust bag
	The vacuum hose is broken or clogged	Check the hose, replace it if necessary

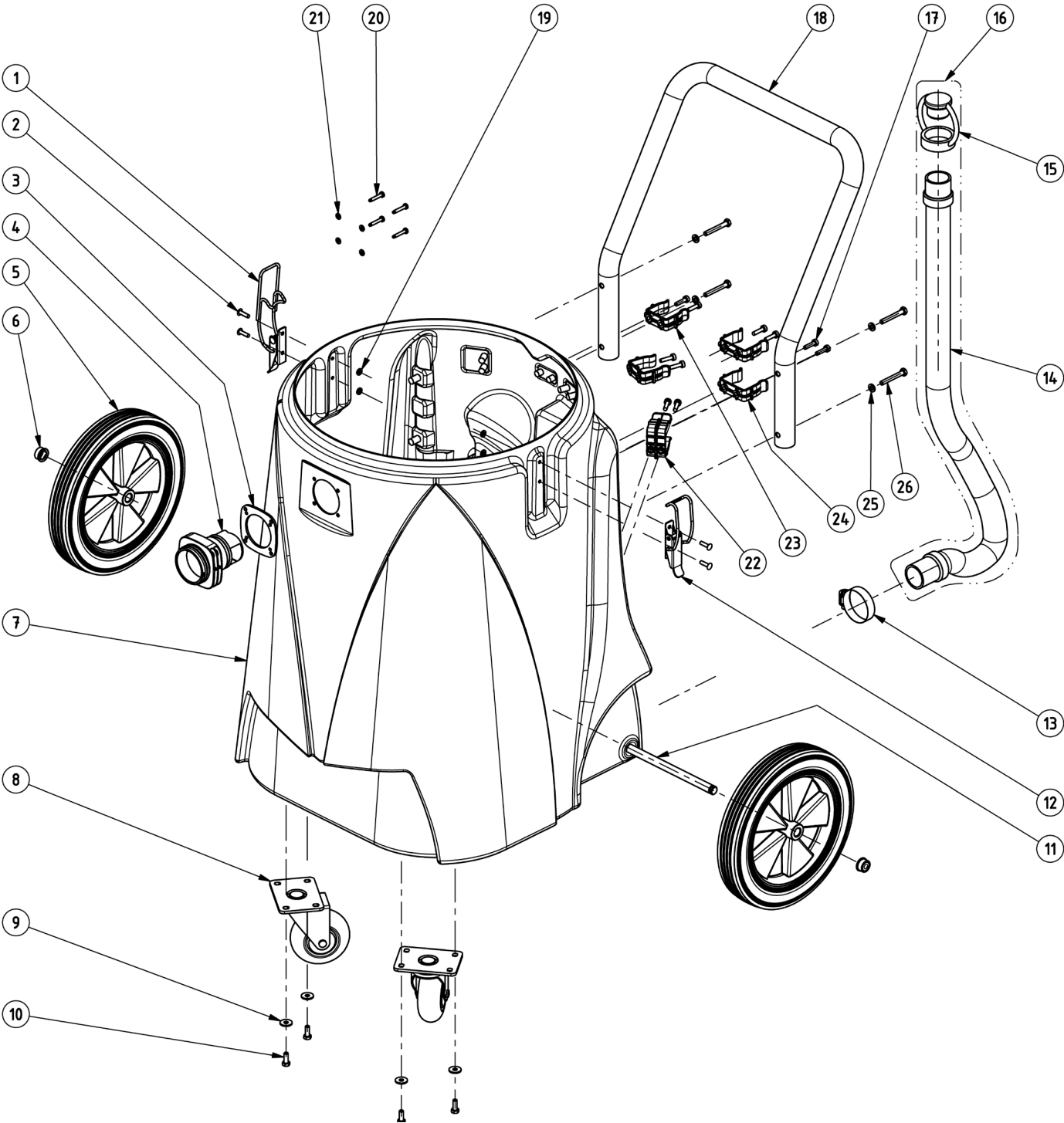
## TECHNICAL SPECIFICATION

ITEM	UNITS	DATA
Model	-	IW80
Voltage	Volt	220 ~ 240
Power	W	2000
Current	Amp	9
Frequency	Hz	50 ~ 60
Capacity	Liter	80
Vacuum	mmH <sub>2</sub> O	2600
Flow rate	L/Min	5880
Noise Level	dB(A)	72
Weight	Kg	32.5
Power cord length	M	10
Dimensions	MM	610×515×960

# WIRING DIAGRAM



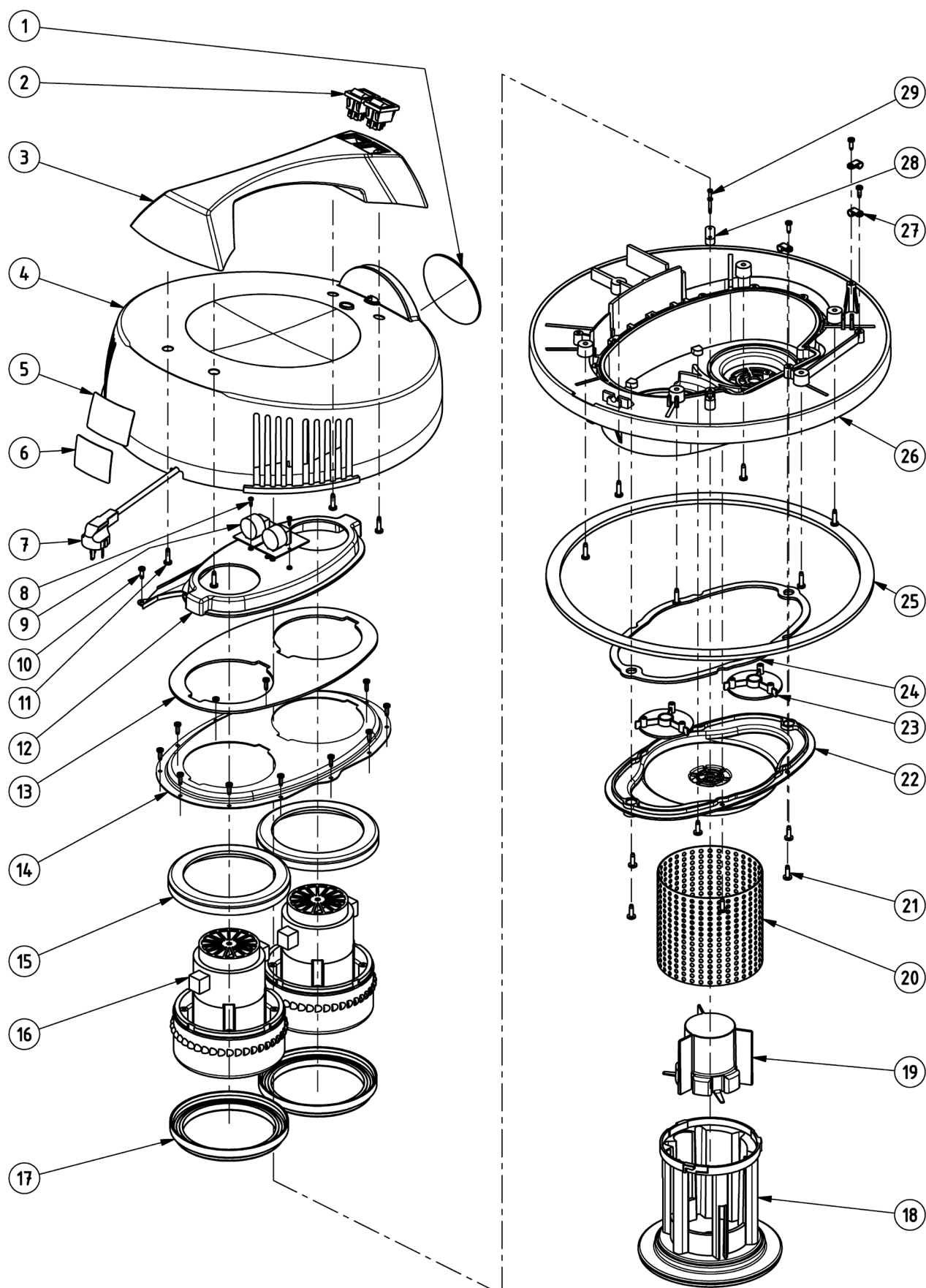
TANK ASSEMBLY



TANK ASSEMBLY

<b>DIA NO</b>	<b>PART NUMBER</b>	<b>DESCRIPTION</b>	<b>NO REQ'D</b>
1	2120211	CLAMP, RIGHT	1
2	1662518	RIVET	4
3	2020202	GASKET	1
4	2420006	HOSE HOUSING	1
5	2320228	10" WHEEL	2
6	6110011	SHAFT CAP	2
7	2420001	TANK	1
8	2320210	3.5" CASTER	2
9	1421618	PLAIN WASHER 6×18×1.6, SS	4
10	1021616	HEX HEAD SCREW M6×16, SS	4
11	2410011	WHEEL SHAFT	1
12	2120205	CLAMP, LEFT	1
13	1962050	HOSE CLAMP	1
14	2230132	DRAIN HOSE	1
15	2230131	HOSE PLUG	1
16	2230130	DRAIN HOSE ASSEMBLY	1
17	1221520	PH SCREW M5×20	10
18	2420002	HANDLE	1
19	1421510	PLAIN WASHER 5×10×1, SS	4
20	1321225	PH SELF-TAPPING SCREW ST4.2×25	4
21	1421409	PLAIN WASHER 4×9×0.8, SS	4
22	6210111	TUBE CLAMP	1
23	2420003	TUBE CLAMP	2
24	2310129	TUBE CLAMP	2
25	1411612	PLAIN WASHER 6×12×1.6, SS	4
26	1021645	HEX HEAD SCREW M6×45, SS	4

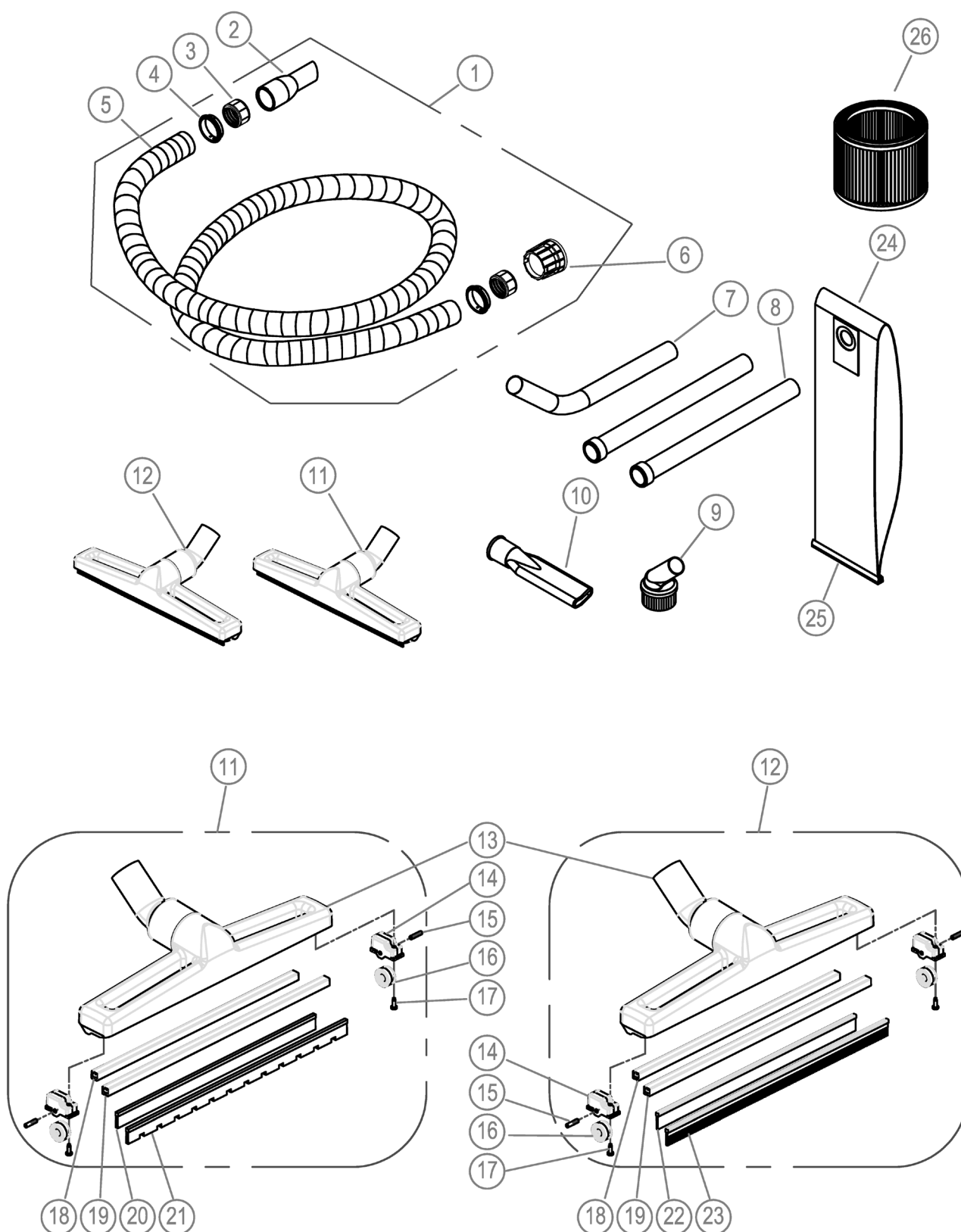
## POWER HEAD ASSEMBLY



## POWER HEAD ASSEMBLY

DIA NO	PART NUMBER	DESCRIPTION	NO REQ'D
1	4010316	"ICE" LOGO	1
2	2110108	SWITCH	2
3	2430011	HANDLE	1
4	2430012	COVER	1
5	2030409	WARNING DECAL	1
6	2430021	SERIAL DECAL	1
7	2430013	POWER CORD	1
8	1311009	SELF-TAPPING SCREW ST2.9×9.5	2
9	2430031	EMI PARTS	2
10	1321213	SELF-TAPPING SCREW ST4.2×13	16
11	1321319	SELF-TAPPING SCREW ST4.8×19,SS	10
12	2430006	MOTOR COVER	1
13	2430007	GASKET	1
14	2430005	FIXING PLATE	1
15	2430009	CUSHION, UP	2
16	2110115	VACUUM MOTOR	2
17	2010103	CUSHION, DOWN	2
18	2110112	FLOAT CAGE	1
19	2110113	FLOAT	1
20	2110116	FILTER	1
21	1321316	SELF-TAPPING SCREW ST4.8×16,SS	6
22	2430001	CAGE HOUSING	1
23	2430014	STOPPING PLATE	2
24	2430008	GASKET	1
25	2430002	GASKET	1
26	2430004	MOTOR HOUSING	1
27	2320236	WIRE CLIP	3
28	2010114	WIRE CLAMP	1
29	1311016	SELF-TAPPING SCREW ST2.9×20	2

## ACCESSORIES



## ACCESSORIES

<b>DIA NO</b>	<b>PART NUMBER</b>	<b>DESCRIPTION</b>	<b>NO REQ'D</b>
1	2420010	VACUUM HOSE ASSY	1
2	2230124	ANGLED HOSE END, 38mm	1
3	2230122	THREADED INSERT	2
4	2230123	CLIP RING	2
5	2230125	HOSE	1
6	2330121	HOSE END	1
7	2230115	WAND	1
8	2230116	STEEL TUBE, SS	2
9	2230126	DUSTING TOOL	1
10	2230127	CREVICE TOOL	1
11	2421030	DRY PICK-UP TOOL, 430mm	1
12	2421035	WET PICK-UP TOOL, 430mm	1
13	2421024	BODY, PICK-UP TOOL, 430mm	2
14	2421019	WHEEL HOUSING	4
15	2421031	AXLE, WHEEL	4
16	2421033	WHEEL	4
17	1321213	PH AUTO TAPPING SCREW ST4. 2×13	4
18	2421017	CLIP, SHORT	2
19	2421018	CLIP, LONG	2
20	2421015	BRUSH STRIP, BACK	1
21	2421014	BRUSH STRIP, FRONT	1
22	2421022	RUBBER STRIP, BACK	1
23	2421021	RUBBER STRIP, FRONT	1
24	2420004	CLOTH BAG	1
25	2330131	CLIP, CLOTH BAG	1
26	2110118	FILTER	1





# Certificate of Compliance

No. DDT-CS130078

We hereby certify that the following product has been tested by Dongguan Dongdian Testing Service Co.,Ltd with the listing standards and found in conformity with the EC Council Directive of 2006/95/EC. It is possible to use CE marking to demonstrate the conformity with this LVD Directive.

**Applicant** : Guangdong ICE Co., Ltd.  
**Address** : Xiangshi Road, Liaobu, Dongguan, Guangdong  
**Product** : DUAL MOTOR VACUUM CLEANER  
**Model Number** : IW80  
**Trade Name** : ICE  
**Manufacturer** : Guangdong ICE Co., Ltd.  
**Address** : Xiangshi Road, Liaobu, Dongguan, Guangdong  
**Test Standards** : EN 60335-1:2012  
EN 60335-2-2 :2004/A11:2012  
**Test Report No** : DDT-RS130078



Dave Gao

Date of Issue: Oct. 31th.2013

The statement is based on a single evaluation of one sample of above mentioned products. It does not imply an assessment of the whole production and does not permit the use of the test lab logo

**Dongguan Dongdian Testing Service Co., Ltd**

No. 17, Zongbu Road 2, Songshan Lake Sci&Tech, Industry Park, Dongguan City,  
Guangdong Province, China, 523808 Tel: +86-0769-26621882 <http://www.dgddt.com>



# Certificate of Compliance

No. DDT-CE130222

We hereby certify that the following product has been tested by Dongguan Dongdian Testing Service Co.,Ltd with the listing standards and found in conformity with the EC Council Directive of 2004/108/EC. It is possible to use CE marking to demonstrate the conformity with this EMC Directive.

**Applicant** : Guangdong ICE Co., Ltd  
**Address** : Xiangshi Road, Liaobu, Dongguan, Guangdong  
**Product** : DUAL MOTOR VACUUM CLEANER  
**Model Number** : IW80  
**Trade Name** : ICE  
**Manufacturer** : Guangdong ICE Co., Ltd  
**Address** : Xiangshi Road, Liaobu, Dongguan, Guangdong  
**Test Standards** : EN 55014-1:2006+A1:2009 +A2:2011;  
EN 55014-2:1997+A1:2001+A2:2008;  
EN61000-3-2:2006+A1:2009+A2:2009; EN61000-3-3:2008.  
**Test Report No** : DDT-RE130222



Date of Issue: August 27, 2013

The statement is based on a single evaluation of one sample of above mentioned products. It does not imply an assessment of the whole production and does not permit the use of the test lab logo

**Dongguan Dongdian Testing Service Co., Ltd**

No. 17, Zongbu Road 2, Songshan Lake Sci&Tech, Industry Park, Dongguan City,  
Guangdong Province, China, 523808 Tel: +86-0769-22891499 <http://www.dgddt.com>